

The Bridgewater II

3 Bedrooms | 2.5 Bathrooms | 2-Car Garage | 2,522+ SF



BUNGALOW



COTTAGE



ARTS AND CRAFTS



FARMHOUSE WITH STONE



EASTERN SEABOARD



CRAFTSMAN



MODERN FARMHOUSE

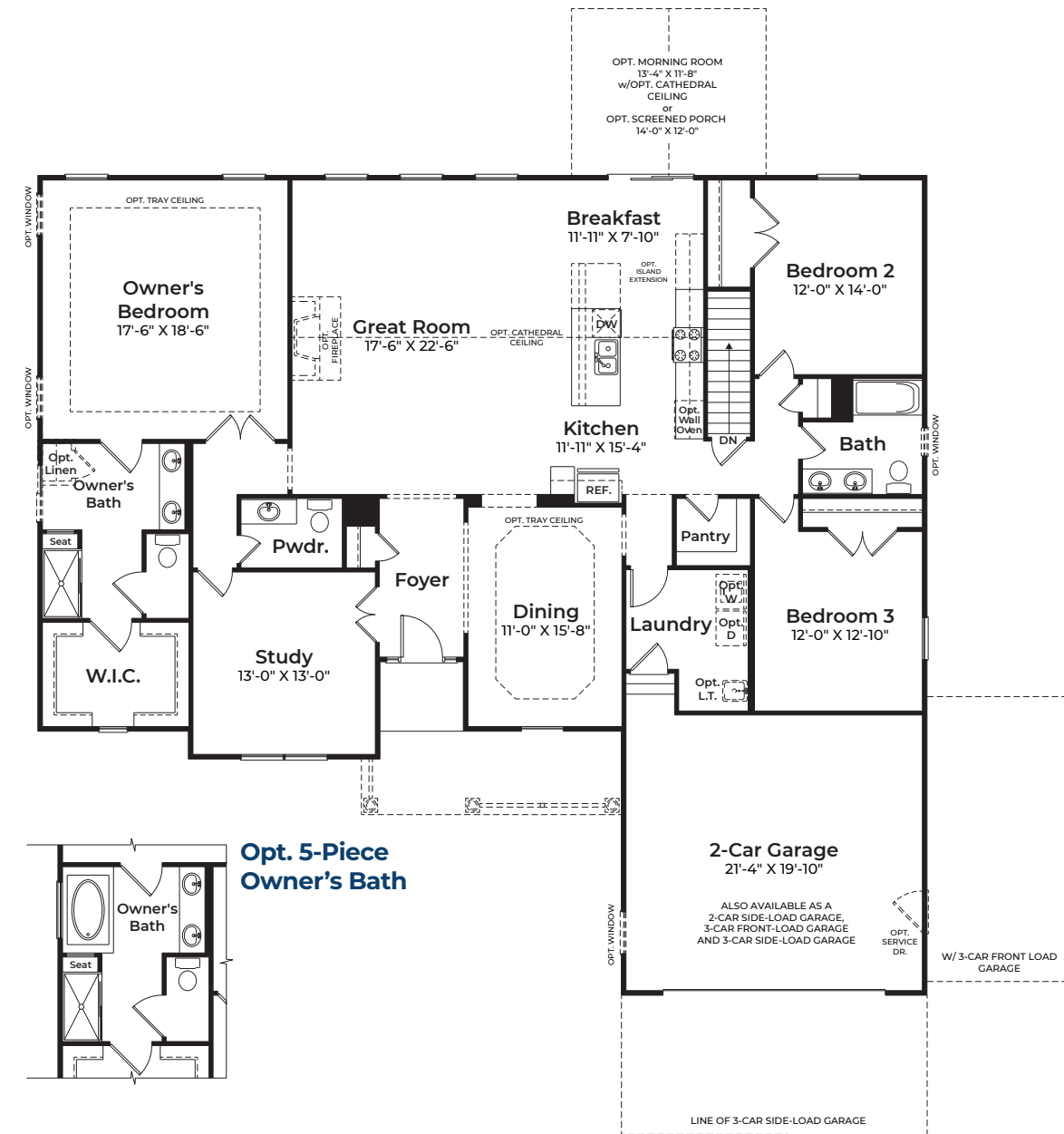
BASE PRICE
HOMESITE NUMBER
HOMESITE PREMIUM
OPTIONS
TOTAL

ATLANTIC
BUILDERS

[ATLANTICBUILDERS.COM](https://atlanticbuilders.com) 

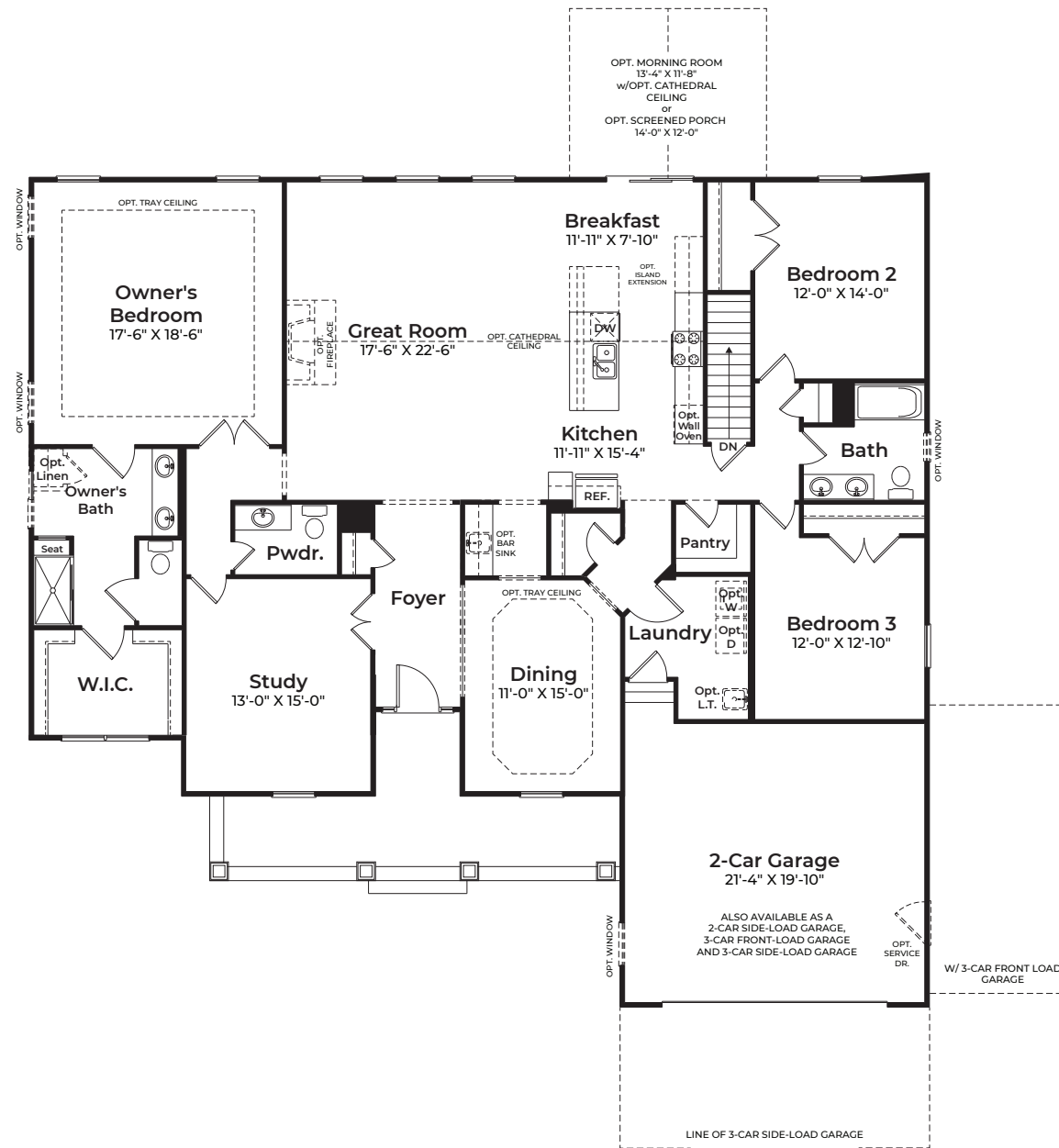
*These renderings and floorplans are conceptual only. Actual details may vary. This insert is for illustrative purposes only. Atlantic Builders' continuing research and development program means specifications and plans are subject to change without notice. Standard features vary per community. Please consult Community Sales Manager for details. 5/2/2023

THE BRIDGEWATER II



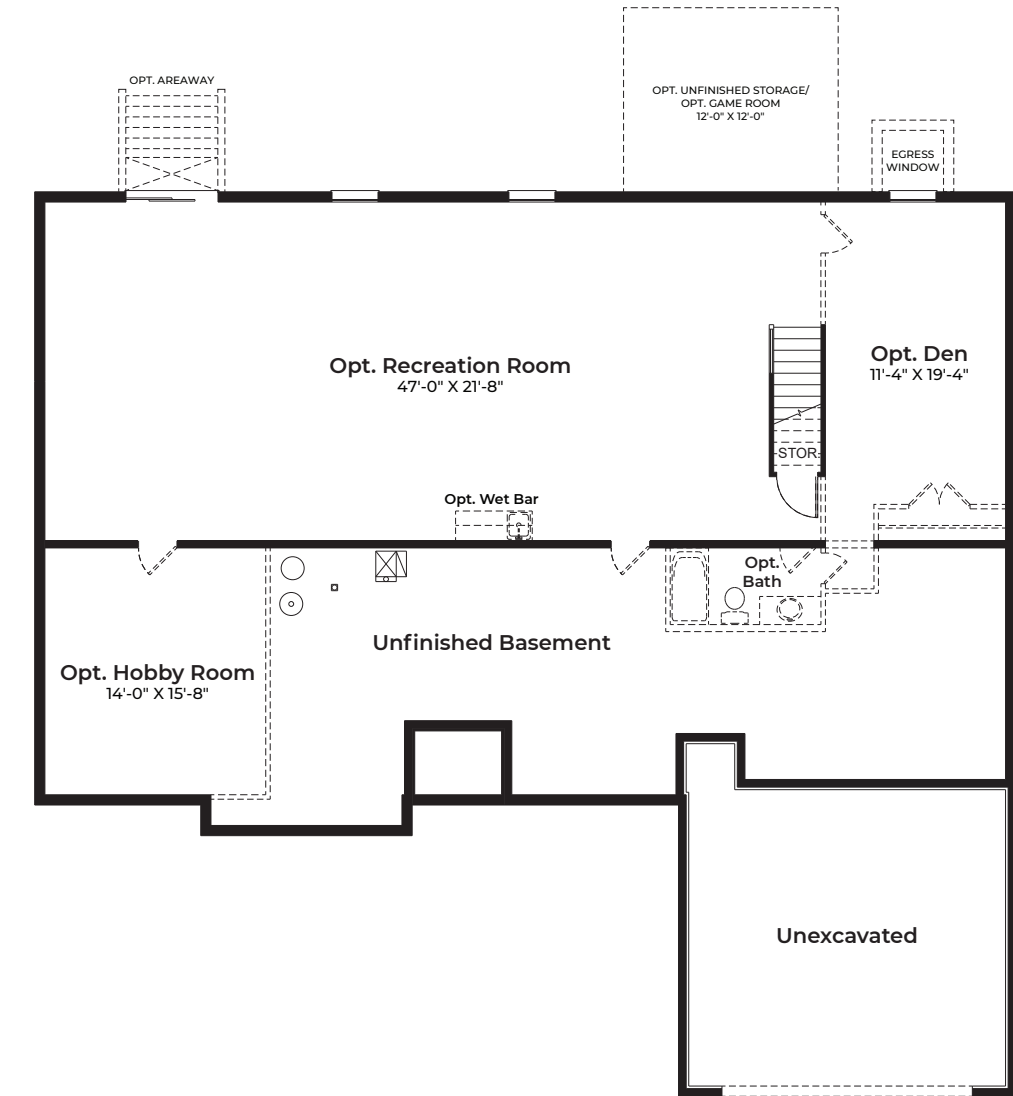
MAIN LEVEL

Eastern Seaboard & Farmhouse Elevations w/ porch

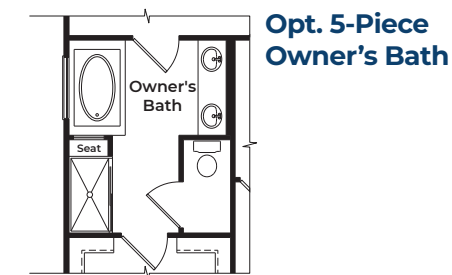


ALTERNATE MAIN LEVEL

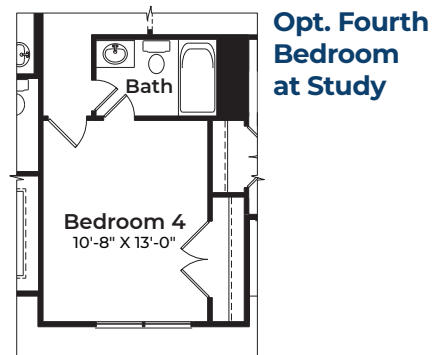
Craftsman, Cottage, Arts & Crafts, Bungalow and Modern Farmhouse Elevation



FOUNDATION



Opt. 5-Piece Owner's Bath



Opt. Fourth Bedroom at Study